

The Legendary Green Bay Packers!

Legendary Green Bay Packers!

Go Pack Go!

1919
Packers founded at meetings in editorial room of Green Bay Press-Gazette (Aug. 11 and 14).

1921
J.E. Clair of Acme Packing Company granted American Professional Football Association franchise for Green Bay Packers (Aug. 27); league renamed NFL in 1922. Packer-Bear series launched at Chicago (Nov. 27), Packers losing 20-0 to Chicago Staleys, who changed name to Bears in 1922.

1922
Packers disciplined for using college players under assumed names, Clair turns franchise back to league, (Jan. 28). Curly Lambeau promises to obey rules, uses \$50 of own money to buy back franchise for \$250. Bad weather, low attendance plague Packers, merchants raise \$2,500, public non-profit corporation set up under direction of A.B. Turnbull; Lambeau remains general manager, coach.

1923
Andrew B. Turnbull is elected first president of Green Bay Football Corporation (Aug. 23).

1925
Packers beat Bears for first time, 14-10, in fourth regular-season meeting (Sept. 27). City Stadium dedicated, 6,000 initial capacity (Sept. 20).

1927
Packers surprise "Big Town" skeptics, shut out football Yankees, 13-0, in first New York appearance (Oct. 23).

1929
Packers sign B Johnny Blood (McNally), T Cal Hubbard, G Mike Michalske, win first NFL championship, posting 12-0-1 record.

1930
Packers win second straight NFL title (10-3-1).

1931
Packers capture third consecutive NFL championship, extending unbeaten streak to 22 games, finish 12-2-0.

1932
Packers just miss winning fourth straight title on 10-3-1 mark, with the Bears winning the crown with 7-1-6 record because ties were not counted in standings.

1934
Fan falls from stands at East (old City) Stadium, sues Packers and wins \$5,000 verdict. Insurance company goes out of business and Packers go into receivership, about to fold, but Green Bay businessmen come to rescue, raise \$15,000 in new capital and reorganize club.



Bellevue Field

Although it was called Bellevue Park it wasn't located in Bellevue, but rather in the Town of Preble. Bellevue park was located east of the current Schreiber Cheese Plant on Main Street. This was the field the Packers used when Hagemester Park was sold to the City for the new East High School. The large building housed Hagemester Brewery at the time and there weren't any structures between the brewery and Deckner Ave, a perfect place for a field.

Neville Public Museum of Brown County

City Stadium, mid 50's, and the Packers are on the way to a touchdown!



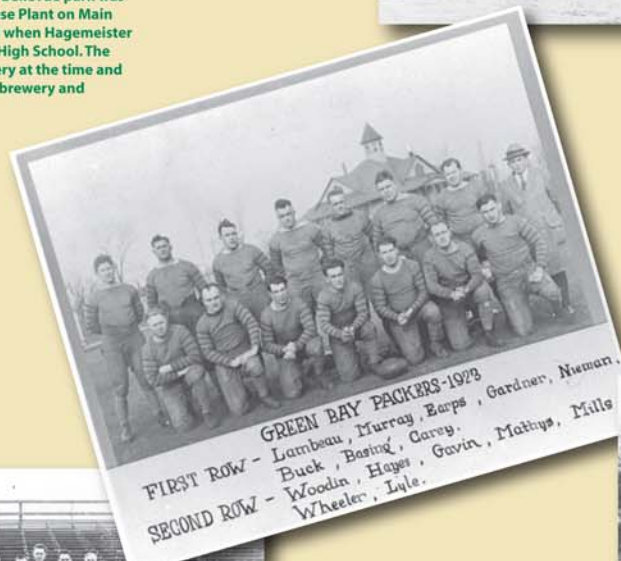
Neville Public Museum of Brown County

The 1920's team players consisted of the following members:

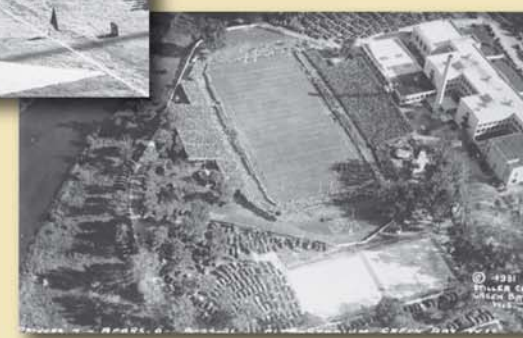
Verne Lewellyn, Nebraska
Jug Earp, Monmouth College
Cub Buck, Wisconsin
Red Dunn, Marquette
Carl Lidberg, Minnesota
Lavvie Dilweg, Marquette
Johnny "Blood" McNally, St. Johns
"Iron Mike" Michalske, Penn State
Bo Molenda, Michigan
Cal Hubbard, Michigan
Arnie Herber, Regis (Arnie was born and raised in Green Bay)



GREEN BAY PACKERS 1922
FIRST ROW - Howard, Earps, Woodin, Hayes
SECOND ROW - Lambeau, Buck, Wheeler, Gardner, Mathys
THIRD ROW - Nieman, Lyle, Mills, Murray



GREEN BAY PACKERS 1923
FIRST ROW - Lambeau, Murray, Earps, Gardner, Nieman,
SECOND ROW - Buck, Basing, Carey,
Woodin, Hayes, Gavin, Mathys, Mills,
Wheeler, Lyle.



City Stadium, 1931, the Packers and the Bears
Neville Public Museum of Brown County

1935
Don Hutson of Alabama, to become most feared pass receiver in pro football history, signed by Packers.

1936
Packers make Russ Letlow, University of San Francisco guard, their No. 1 choice in first NFL Draft (Feb. 8). Packers win fourth NFL championship, first under playoff system. Post 11-1-1 record, defeating Boston Redskins for title in New York's Polo Grounds, 21-6, after George Preston Marshall moves game (Dec. 13).

1938
Packers win Western Division championship, lose to Giants in NFL title game at New York, 23-17 (Dec. 11).

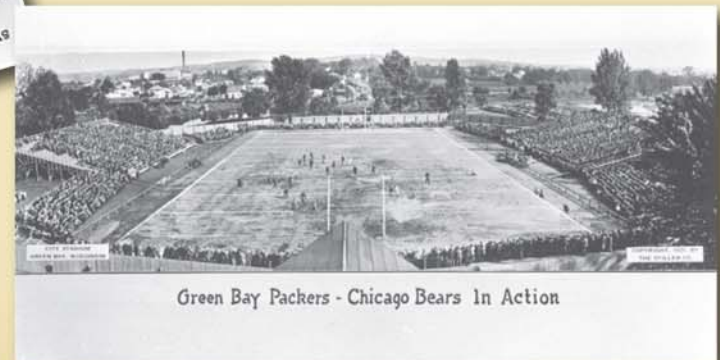
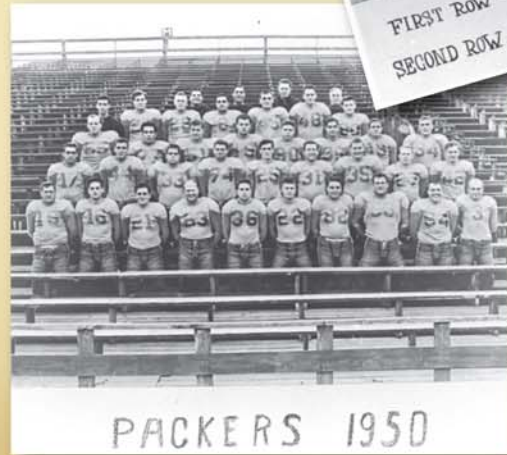
1939
Packers repeat for Western Division title, rout Giants in title game at Milwaukee, 27-0 (Dec. 10).

1941
Packers tie Bears for Western Division title, fall to Bears in Chicago playoff, 33-14 (Dec. 14).

1944
With Ted Fritsch scoring both touchdowns, Packers beat Giants 14-7 at New York's Polo Grounds for sixth NFL title (Dec. 17).

1945
Don Hutson catches four TD passes, kicks five PATs in second quarter against Detroit at Milwaukee, sets all-time single-quarter scoring record (29 points), Packers win, 57-21 (Oct. 7).

1949
Packers play Thanksgiving intra-squad game at (old) City Stadium, raise \$50,000 to stay afloat financially. Packers dip to all-time low under Curly Lambeau, 2-10-0.



The Green Bay Packers and the Chicago Bears play in Old City Stadium at East High
Opened in the fall of 1925, there were 6,000 in attendance at this game. Little did anyone there realize that the Green Bay Packers - Chicago Bears rivalry would be going on for 80 years. Notice there was no press box, scoreboard or time clock, all things to come.
Neville Public Museum of Brown County

Find out more about us at
www.green-bay.org

"The Green Bay Packers are honored to be represented on the USS Green Bay and associated with the dedicated men and women of the U.S. Navy and Marines who call it home. We are grateful for the sacrifices they make on behalf of our country and are proud to offer our continued full support to Green Bay's namesake vessel and its crew."
- Mark Murphy, Green Bay Packers President/CEO